



SCALE: 1/4" = 1'0"

DRAWN BY A. J. FEITH
 REGIONAL SALES CONSULTANT
 WESTCHESTER MODULAR
 HOMES, INC.

BUILDER:

DATE:

HOMEOWNER:

USE GROUP

R4

CONST. TYPE:
 WOOD
 FRAME

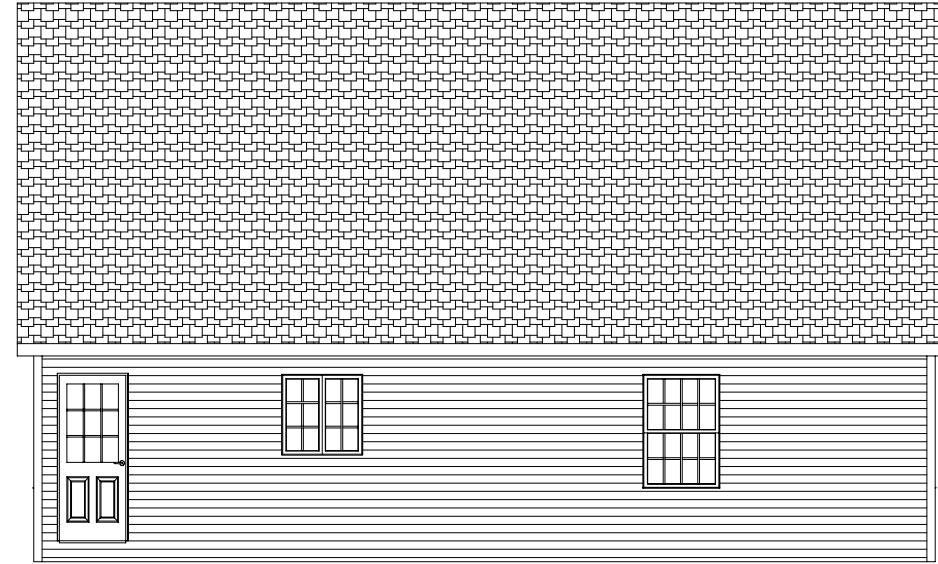
**FALMOUTH WITH
 A DORMERS
 FRONT ELEVATION**

PAGE:

1



LEFT



REAR



RIGHT

SCALE: 1/8" = 1'0"

DRAWN BY A. J. FEITH
REGIONAL SALES CONSULTANT
WESTCHESTER MODULAR
HOMES, INC.

DATE:

BUILDER:

REGIONAL SALES CONSULTANT
WESTCHESTER MODULAR
HOMES, INC.

HOMEOWNER:

USE GROUP

R4

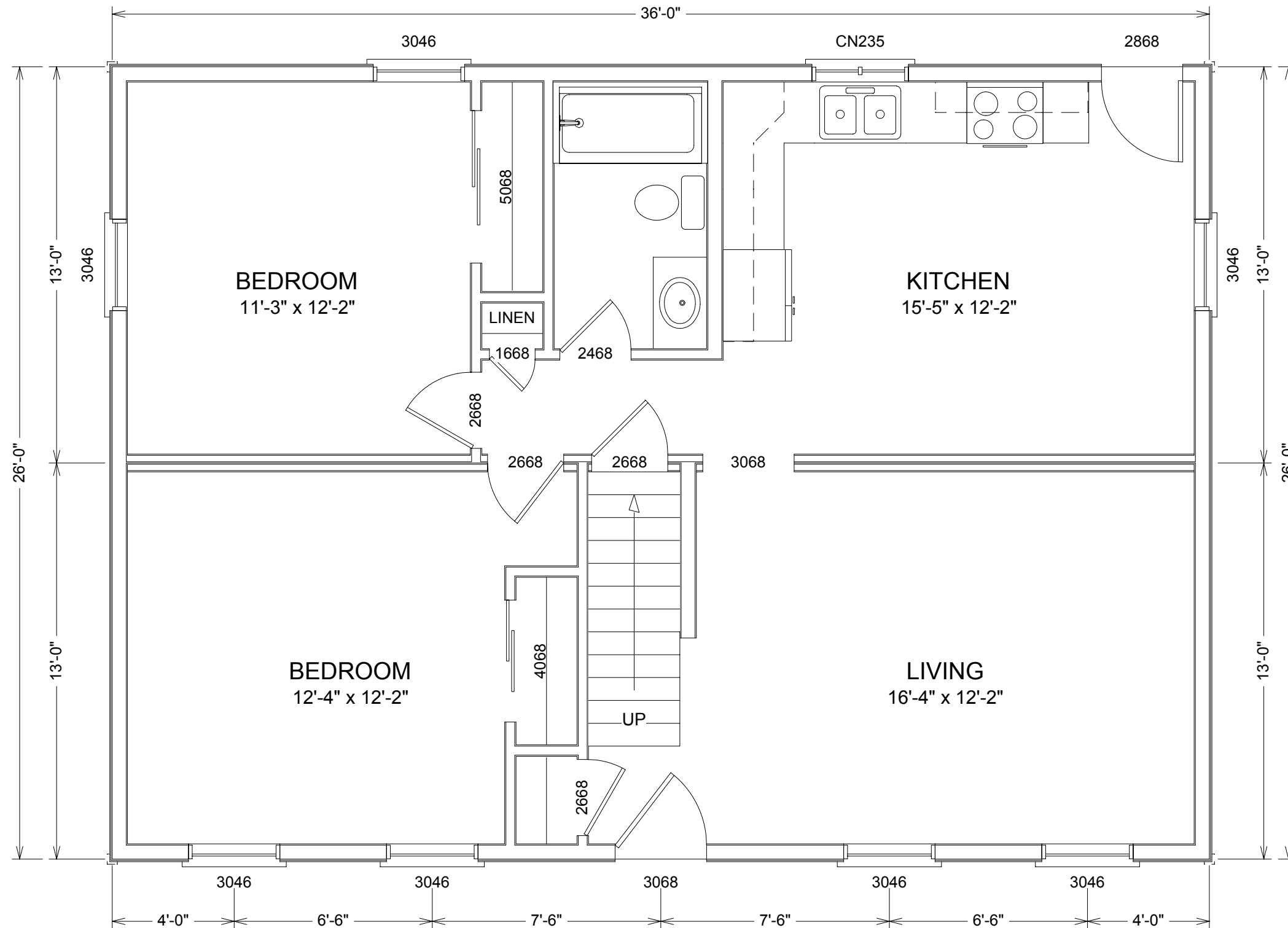
CONST. TYPE:

WOOD
FRAME

**FALMOUTH WITH
A DORMERS
SIDE AND REAR
ELEVATIONS**

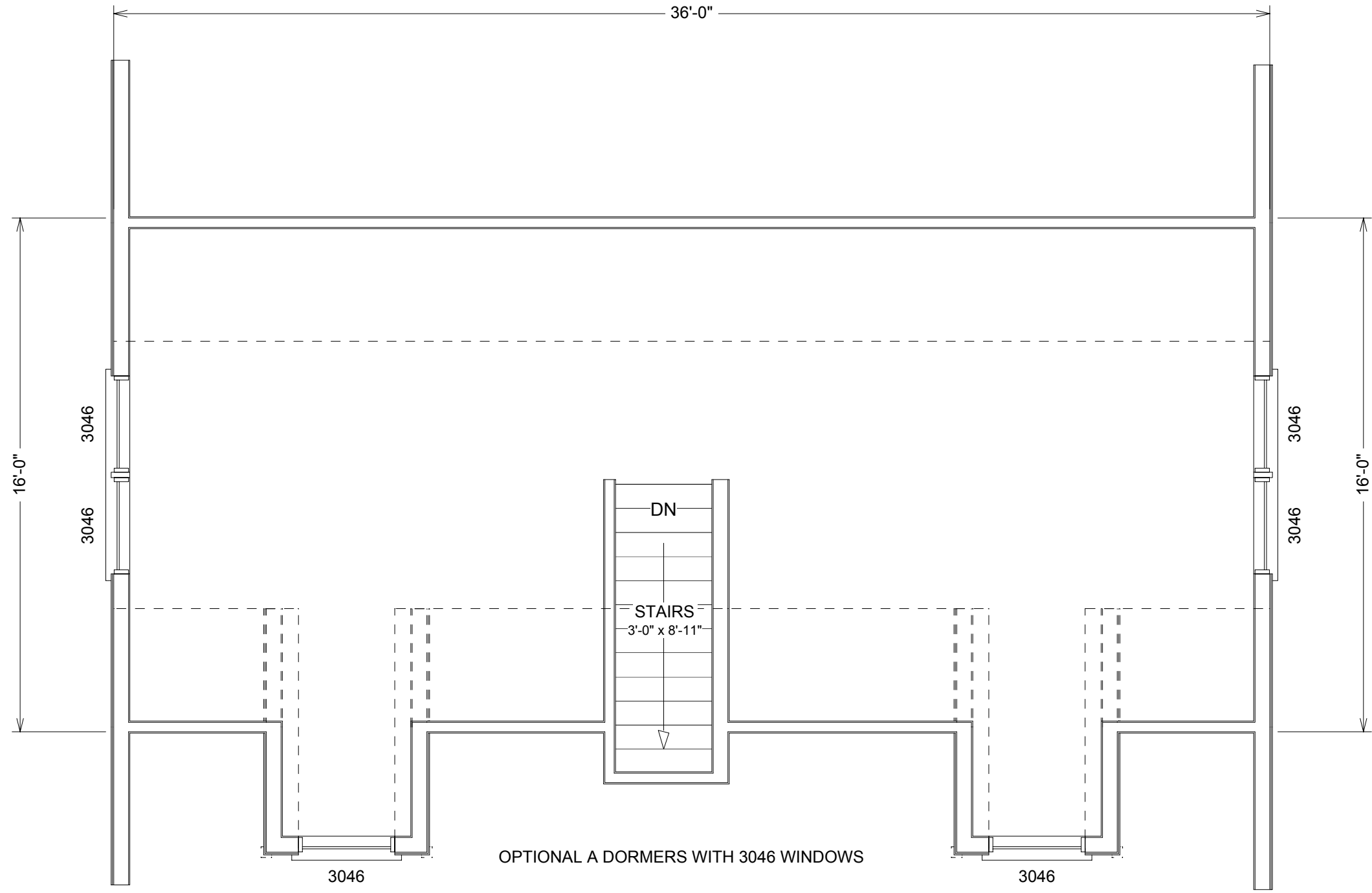
PAGE:

2



SCALE: 1/4" = 1'0"

DRAWN BY A. J. FEITH REGIONAL SALES CONSULTANT WESTCHESTER MODULAR HOMES, INC.		BUILDER:	USE GROUP	PAGE:	
DATE:		HOMEOWNER:	R4	3	
			CONST. TYPE:	FALMOUTH WITH A DORMERS FIRST FLOOR	
			WOOD FRAME		



SCALE: 1/4" = 1'0"

DRAWN BY A. J. FEITH
 REGIONAL SALES CONSULTANT
 WESTCHESTER MODULAR
 HOMES, INC.
 DATE:

BUILDER:
 HOMEOWNER:

USE GROUP
R4
 CONST. TYPE:
 WOOD
 FRAME

FALMOUTH WITH
 A DORMERS
 UNFINISHED AREA
 SECOND FLOOR

PAGE:
4